



NOW OFFERING

**SURPLUS TO ONGOING NEEDS OF
STELLANTIS BRAMPTON STAMPING
PLANT**



**1700 TON KOMATSU
TRANSFER PRESS MODEL
E4T1700-05-120-MF**

MUST BE MOVED!

ACCEPTING ALL OFFERS

Available for Inspection by Appointment



Komatsu Straight Side Transfer Press with Rolling Bolster

Model: E4T1700-05-120-MF

Year: 1991

1700 Metric Ton (1873 Short Ton)

750 mm Slide Stroke (29.5")

150 mm Slide Adjustment (5.9")

1350 mm Die Height (SDAU from Bolster) (53.2")

6000 mm x 2300 mm Slide Area (236.2" x 90.6")

6000 mm x 2300 mm Bolster Area (236.2" x 90.6")

280 mm Bolster Thickness (11.0")

700 mm Height from Floor to Top of Bolster (27.6")

**Rolling Bolster
6 & 10-20 SPM**

50 Metric Ton Carrier Capacity (55 Short Ton)

Main Motor 268 HP (DC 200 kw)

Transfer Feeder

825 mm Feed Height (From Top Face of Bolster) (32.5")

1200 mm Feed Stroke (Distance Between Dies) (47.2")

350 mm Clamp Stroke (13.8")

200 mm Lift Stroke (7.87")

Transfer Bar Closed Inside Distance

1300, 1500, 1800, 2100, 2400 mm

51.2, 59.1, 70.9, 82.7, 94.5 inch

Die Cushion (Pneumatic Type)

(W1) 120 Metric Ton (132 Short Ton)

(W2) 60 Metric Ton (66 Short Ton)

(W3, W4, W5) 5 Metric Ton (5.5 Short Ton)

250 mm Stroke (9.8")

800 x 1700 mm Pad Area (31.5" x 66.9")

Press Control Console

REQUEST QUOTE



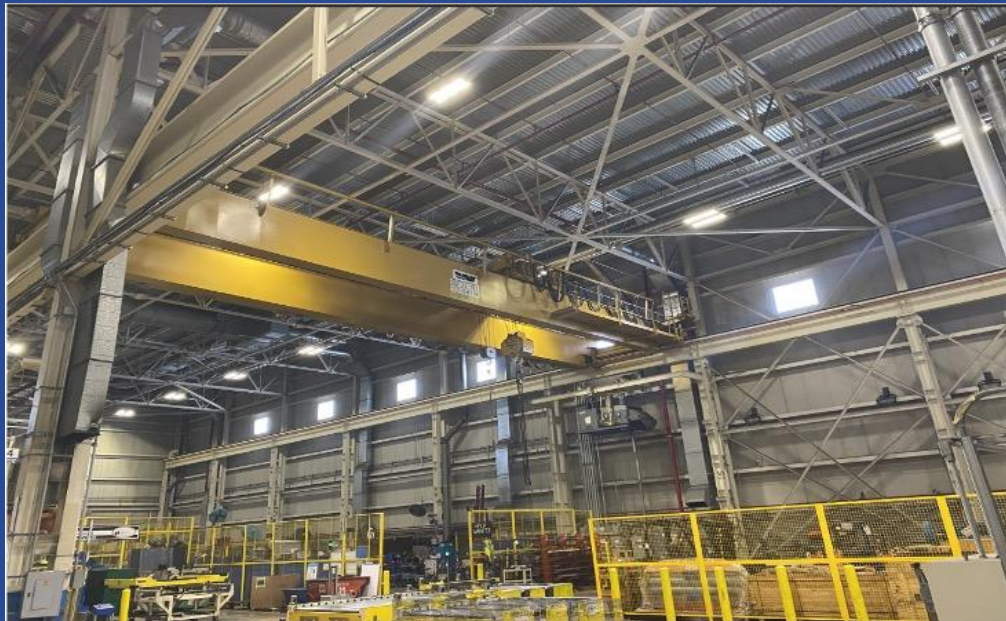


(2) 28 Ton Whiting Cranes

+

(1) 33 Ton Whiting Crane

MORE INFORMATION TO COME



Contact us Today!

Chase Thornton

Asset Management Group

PH: (313) 499-6490

FX: (313) 839-9600

Email: Chase@amgrouponline.com

www.amgrouponline.com

Let us know about your surplus, from one machine to an entire plant.



Asset Management Group | 20501 Hoover Road, Detroit, MI 48205

[Unsubscribe rogerb@pfisales.com](mailto:rogerb@pfisales.com)

[Update Profile](#) | [Constant Contact Data Notice](#)

Sent by chase@amgrouponline.com powered by



Try email marketing for free today!